



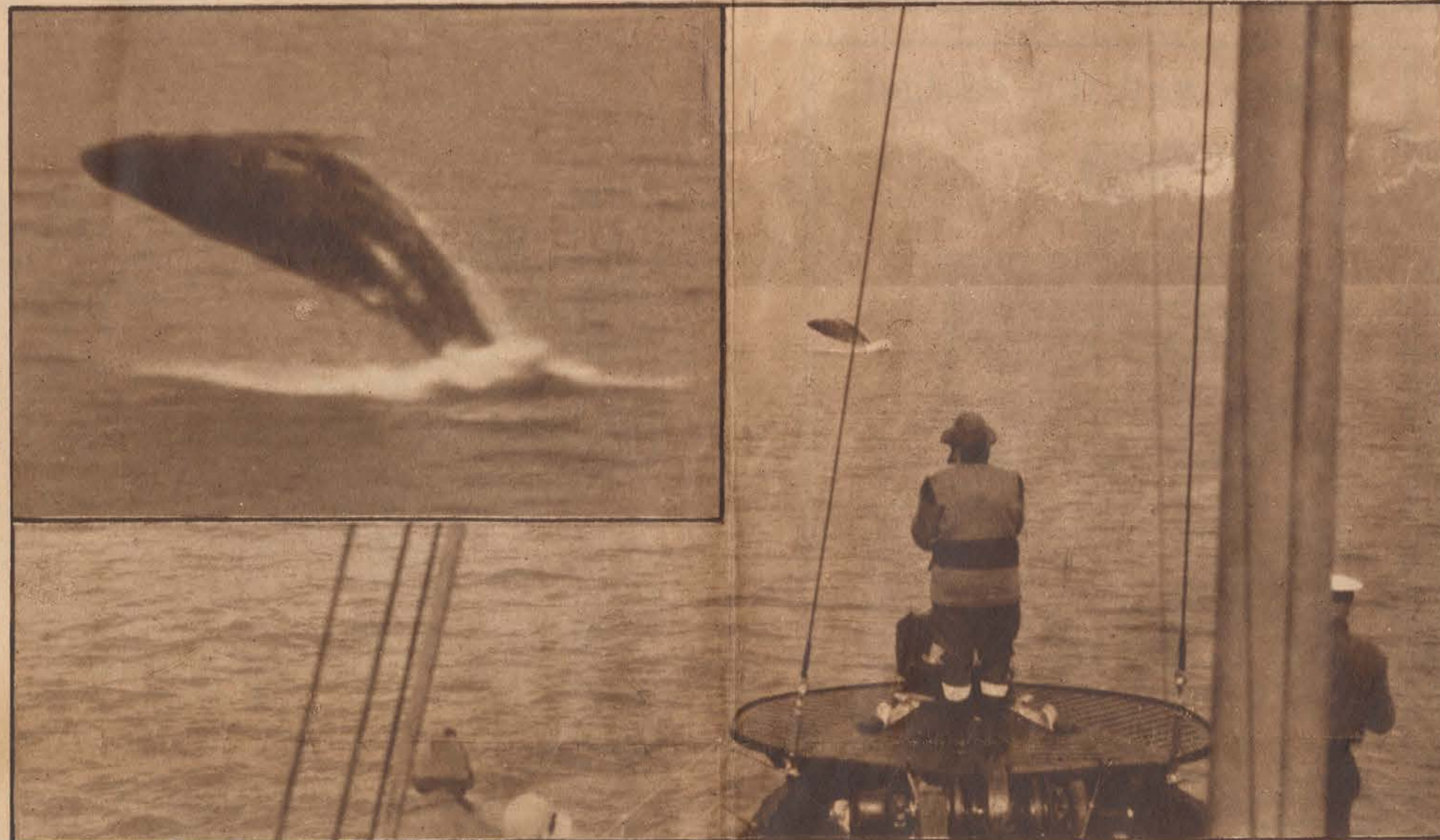
**Bruin in Action**  
The Kodiak, or brown bear, is the largest carnivorous animal in the world. Above—Running at full speed. Right—Walking quietly. The bears weigh up to 1,500 pounds.  
*Finley and Pack*

**With a Catch**  
A brown bear eating a salmon he has caught in a stream by the method shown in the strip of pictures on the right edge of the page.  
*Finley and Pack*

**Photographing the Wild Life of Alaska in Its Natural Habitat**



**The Blind**  
The photographers hid themselves and their camera as best they could behind sticks and brush to make the bear photographs shown above and at the left. This shows William L. Finley operating his camera.  
*Finley and Pack*



**A Humpbacked Whale at Play Jumping Clear of the Water**

This is believed to be the first picture ever taken of a whale leaping entirely out of the water—a remarkable feat, inasmuch as the whale weighs perhaps twenty tons and is some forty-five feet long. The inset gives a closer view. The pictures on these pages were taken on an expedition into southeastern Alaska by Arthur N. Pack and William L. Finley on the yacht *Westward* under the auspices of the American Nature Association and *Nature Magazine*. Their object was to photograph animal and bird life and in particular to study the habits of the Alaskan brown bear.  
*Photographs by William L. Finley and Arthur N. Pack*



**Awaiting a Bear**  
A. N. Pack and A. Hasselburg, the guide, on the edge of a salmon stream waiting for a bear to go fishing to photograph him. The gun was carried for protection, but did not have to be used. Bears were allowed to approach within twenty feet, then frightened off by shouting.  
*Finley and Pack*



**Totem Poles**  
Right—The tribal symbols of some Alaska Indians in the village of Mamalliacula in northern British Columbia. *Finley and Pack*

**Gulls at Play**  
Left—Two young sea-gulls holding a mock battle on the deck of the *Westward*, the yacht which took the expedition northward.  
*Finley and Pack*



**The Westward**  
The expedition yacht in Glacier Bay in southeastern Alaska.  
*Finley and Pack*

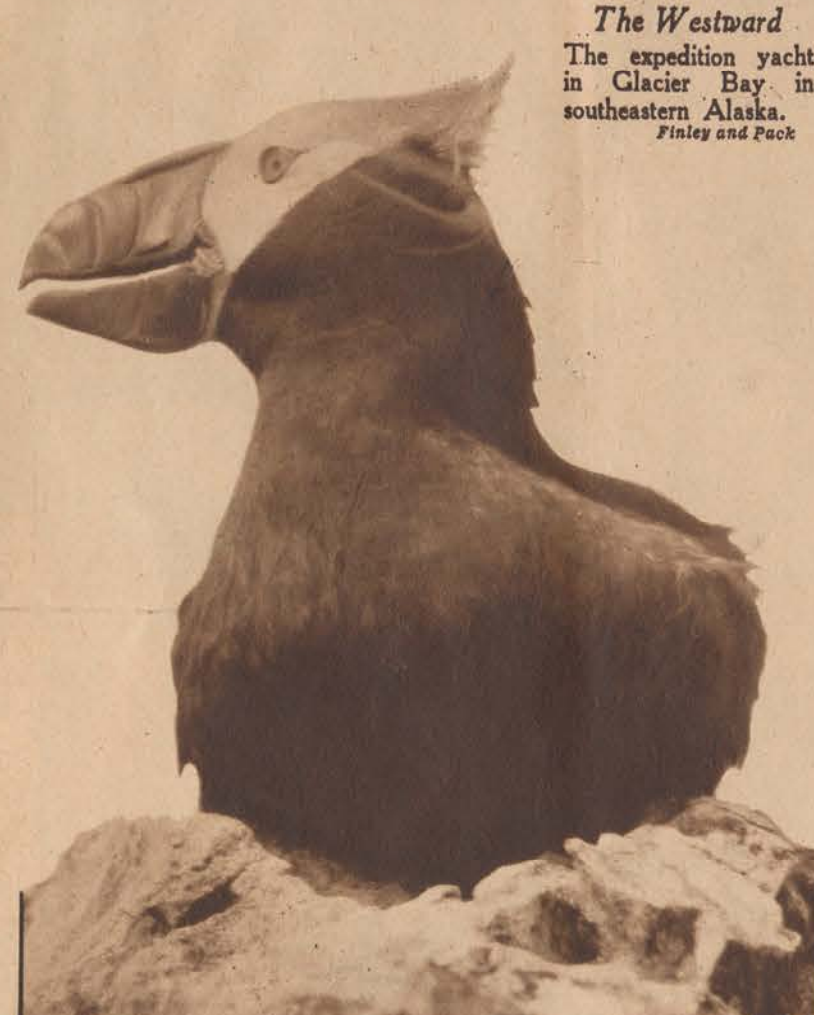


**The Bear Goes Fishing for a Salmon**  
The progress of a sally into a stream is shown in this strip. The bear dashes full speed into the water seeking to catch one of the salmon going from the ocean upstream to spawning places in shallow water. At the bottom, the bear is closing his paws on a fish.  
*William L. Finley and Arthur N. Pack*

**The Alaskan Brown Bear Walks for the Camera**  
These two bears went fishing for salmon in a stream on Admiralty Island and scented the photographer. This strip from a motion picture film shows the progress of their alarm. At the top one bear rises to look for the source of danger. Then the other bear also rises. At the bottom, both bears are walking backward on their hind legs away from the peril.  
*William L. Finley and Arthur N. Pack*



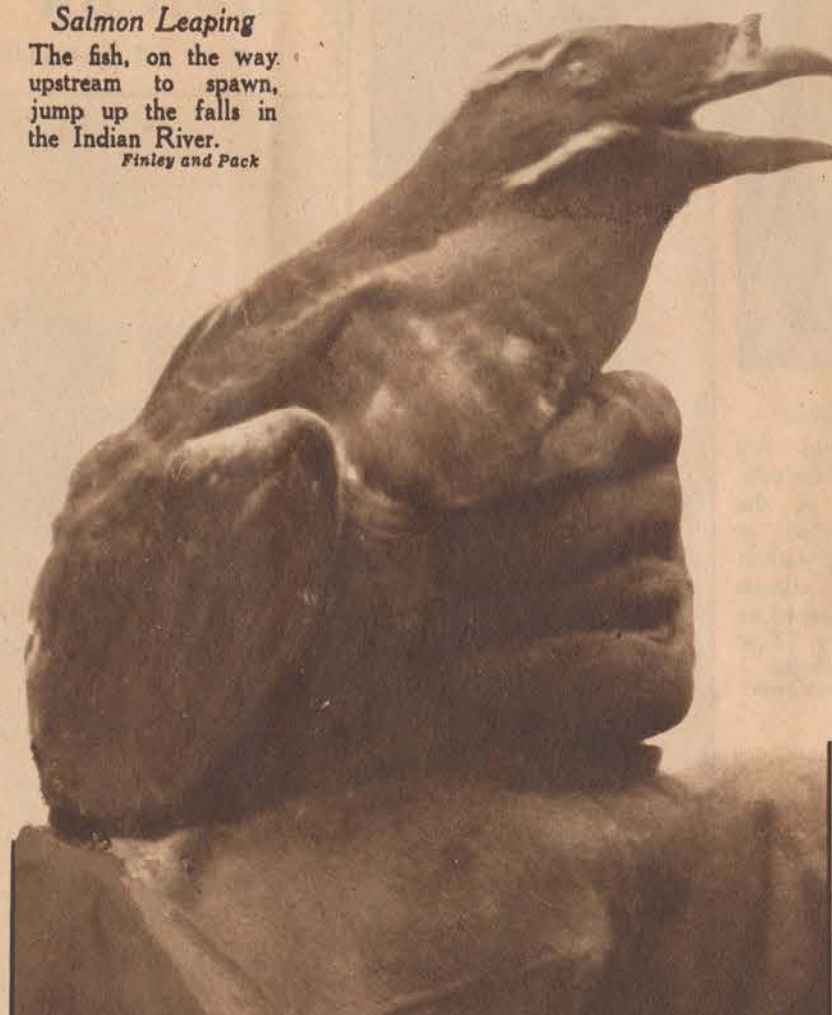
**A Colony of California Murrelets in Alaska**  
These birds, built like penguins, live on fish, which they dive for. Their eggs are pear shaped, to keep them from rolling off the cliff, for there is no nest, and each egg is different in color and pattern, possibly so a bird can pick out its own among a thousand or more together on the cliff.  
*William L. Finley and Arthur N. Pack*



**A Tufted Puffin**  
Right—The strange feathered inhabitant of lower Alaska which is otherwise known as the sea parrot. *Finley and Pack*



**A Close View of the Sea Parrot**  
The tufted puffin resting on a rock apparently in satisfied pride of his bright plumage. His bill is orange and he has yellow curls over his head. He lives on shellfish, diving for them.  
*William L. Finley and Arthur N. Pack*



**Salmon Leaping**  
The fish, on the way upstream to spawn, jump up the falls in the Indian River.  
*Finley and Pack*



**Bawling an Alarm Signal in a Sea Lion Colony**  
Left—The bird that gets its name from the bump on the end of its forehead. The auklets burrow underground, excavating with their bills and feet, for nests, which sometimes are five or six feet down. *Finley and Pack*